

SKYVIEW CENTRE

Skyview
CENTRE

—
SHAPE

Table of Contents

01	Property Overview	p.3
02	Location & Demographics	p.5
03	Leasing Opportunities	p.6
04	About SHAPE	p.8



01 Property Overview

Welcome to Skyview Centre

Located in North Edmonton, Skyview Centre offers a level of service and convenience that is truly unmatched. With a diverse and contemporary mix of national retailers, Skyview Centre brings everything you need for your daily life, including fashion, dining, services and home furnishings to one 27-acre location.



Property Overview

PROPERTY TYPE

Retail Destination

GLA

Commercial: 324,287 SF

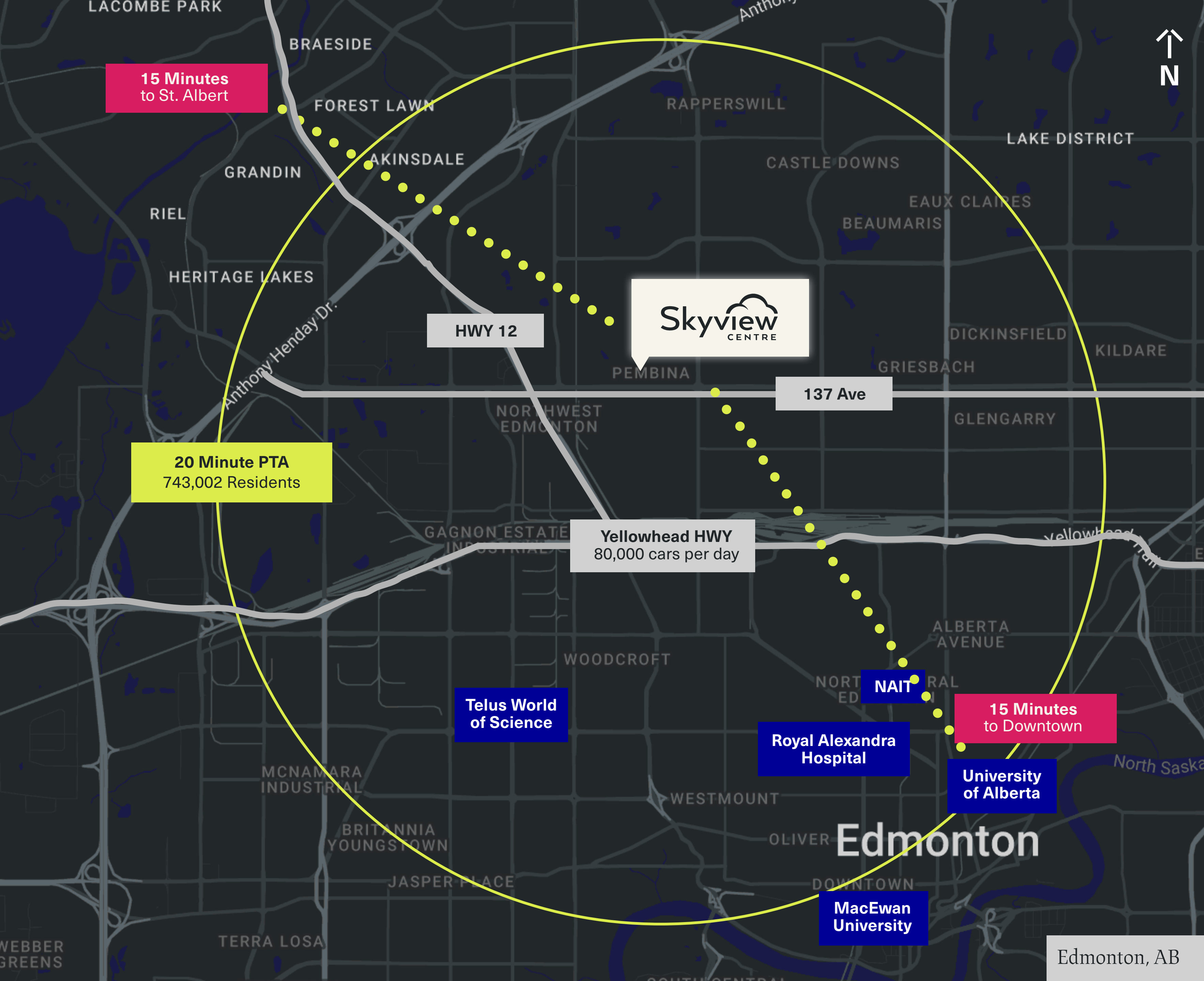
SITE SIZE

27 Acres

KEY TENANTS

50+ retailers complete a 4-phase multi-use plan with a mixture of national brand shops, convenient services and restaurants.





02 Location & Demographics

ACCESS

Adjacent to both Highway 12 and Yellowhead Highway (**80,000** cars per day)

15 minutes to St. Albert, Downtown Edmonton and University of Alberta

POPULATION

743,002 residents live within a 20-minute PTA of the Centre

AUDIENCE

Household Income:
Average **\$113,594**, 42.7% above \$100K

Average Age: 38

BE A PART OF THE STORY

03 Leasing Opportunities



COMMERCIAL LEASING

324,287 SF of open-air, streetfront commercial retail space joining established national brands like Winners, HomeSense, Golf Town, Structube, Best Buy, Saks off 5th, The Keg and more.



SPECIALTY LEASING

Find opportunities in temporary in-line spaces, and activations at Skyview Centre.

Take advantage of peak shopping seasons, gain exposure or expand an existing business without the long-term commitment of a permanent lease.

Specialty Leasing Application →

SITE MAP



Contact For Site Plans →

04 Why SHAPE

The Relentless Pursuit of Better

WE MANAGE LIKE OWNERS

We are invested
in our properties
long term



ASPIRATIONAL RETAIL ENVIRONMENTS

World-class design
and architecture



EXPERTLY CURATED BRANDS

Meticulously
curated retail
collections



DATA-DRIVEN EXPERIENCES

Signature
celebrations and
guest experiences



5-STAR HOST PROGRAM

Hospitality
training for all
staff, from
janitorial
to security



Future-Forward Leasing

SHAPE Leasing specializes in creating design-forward, branded environments that merge tenants' brand values and the local communities they serve.

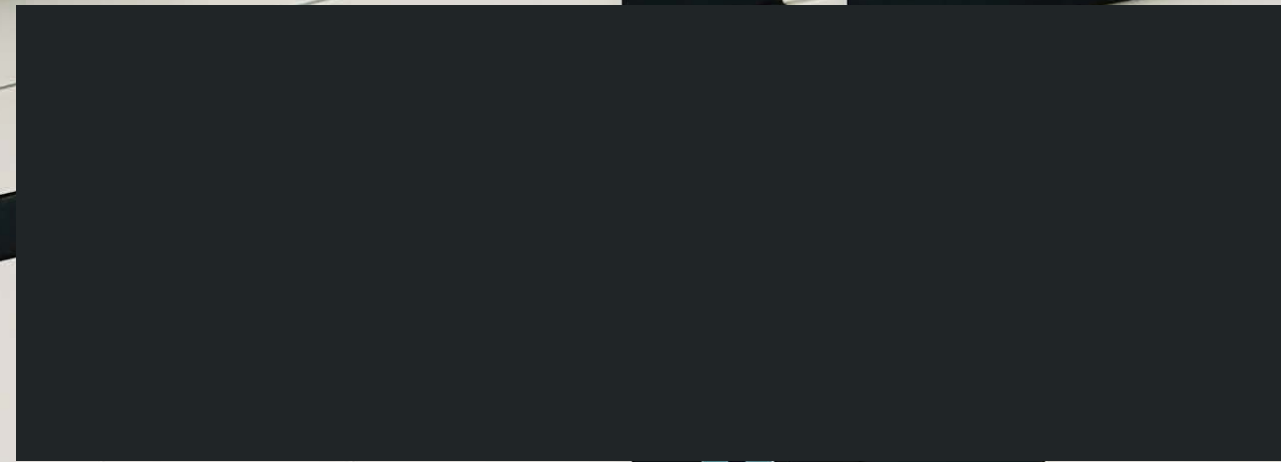
- + CUSTOMER-CENTERED
- + SUPERIOR REAL ESTATE FUNDAMENTALS
- + LOCAL & AGILE
- + PROVEN MARKETING PLAYBOOK

Learn More →



Exceptional Retail Experiences

The SHAPE Retail Management team comes with an in-depth understanding of local community needs and excels at building exceptional retail experiences. Our best-in-class property teams are committed to your success.



Doing Well by Doing Good

SHAPE is committed to an Education, Environment, Social and Governance (EESG) strategy that maximizes progress, social impact and long-term sustainability. Guided by these criteria:

- ✚ **LONG TERM BENEFITS OVER SHORT-TERM GAIN**
- ✚ **ALIGNMENT WITH OUR BUSINESS**
- ✚ **RESULTS WE CAN MEASURE**
- ✚ **BALANCE THE RETURN ON INVESTMENT**



[Learn More](#) →

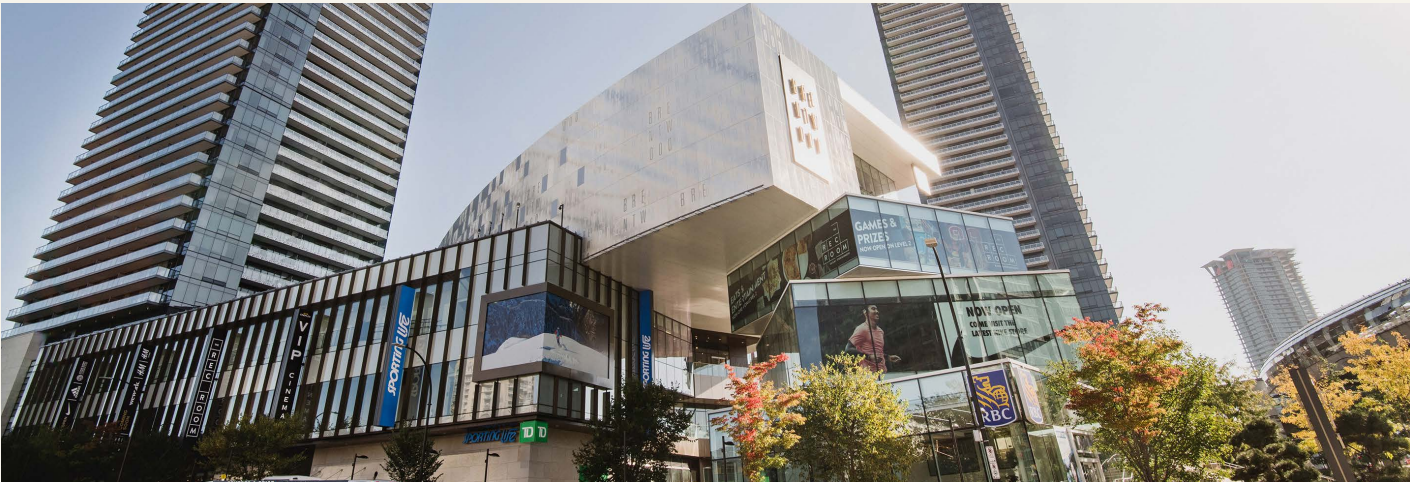


Magnetic Urban Centres

SHAPE is the real estate investment, development and management company behind Canada’s most significant centres of gravity. From master plans to retail destinations, we raise the bar for industry, quality of life and return on investment.



The City of Lougheed, BC



The Amazing Brentwood, BC



Uptown, BC



Nanaimo North Town Centre, BC



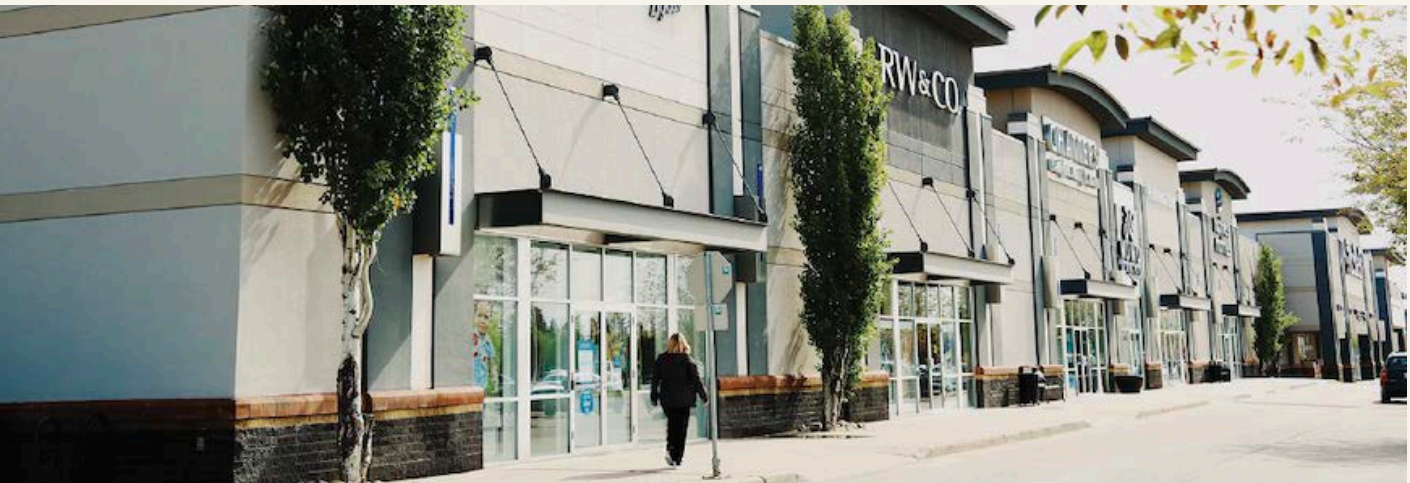
Destination: Deerfoot City, AB



Westhills Towne Centre, AB



Emerald Hills Centre, AB



Skyview Centre, AB

View Portfolio ➔

CONTACT

Leasing

Mina Smidstra

Senior Leasing Representative

mina.smidstra@shape.ca

Specialty Leasing

Barbara Hellinga

Director, Specialty Leasing

barbara.hellinga@shape.ca

604.315.4078

SHAPE Properties

2020 One Bentall Centre
505 Burrard Street, Box 206,
Vancouver, BC Canada
V7X 1M6



[SKYVIEWCENTRE.COM](http://skyviewcentre.com)

—
SHAPE